

Keeping You in Motion



# Systems and Components for Commercial Vehicles



**JOST** ROCKINGER *TRIDEC*



## JSK37 & JSK42

The “industry standard” available in a wide range of configurations

- » Available in cushion and pin type foot mounting
- » Standard versions or eco-friendly low maintenance top plate
- » Secondary locking mechanism with visual safety latch
- » Volume loading and road train rated
- » Option available of extended handle and latch cord for ease of operation
- » Various mounting heights available
- » Sensor unit available for the JSK37CZ and JSK37CW models
- » LubeTronic unit supplied as standard for JSK37CW and JSK37EW models





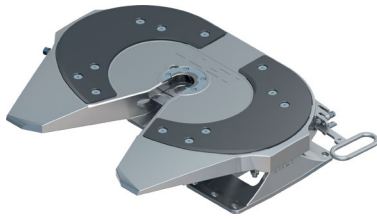
# The JSK37 and JSK42 Family



## LubeTronic

### Automatic lubrication

- » LubeTronic is standard on JSK37CW and JSK37EW models
- » LubeTronic provides fully automatic lubrication of the lock jaw
- » No lubrication necessary on the coupling plate thanks to low maintenance inserts
- » Ideal for long distance routes and dedicated combinations
- » Extended service intervals and reduced maintenance requirements



## JSK37CW Greaseless Fifth Wheel

### Low maintenance

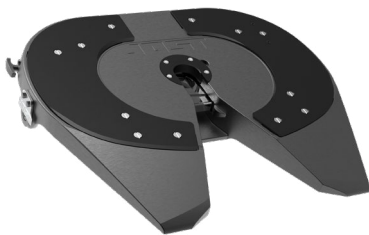
- » JOST greaseless fifth wheels come with standard LubeTronic
- » LubeTronic provides fully automatic lubrication of the lock jaw
- » No lubrication necessary on the coupling plate due to greaseless inserts
- » Ideal for long distance routes and dedicated combinations
- » Extended service intervals and reduced maintenance requirements
- » Comes standard with extended operating handle for ease of use



## JSK42-ASW Fifth Wheel

### Low maintenance

- » Combines pneumatic air release, sensor and low maintenance technologies
- » Clear indication of coupling status shown in the cabin
- » Pneumatic automation reduces back strain
- » Extended service intervals
- » Environmentally friendly



## JSK370 Pneumatic Release

### Ease of use

- » Pneumatic release uncouple at the push of a button
- » Helps to keep your driver safe and avoid OH&S issues
- » Reduces manual effort required to uncouple the fifth wheel
- » Available in standard and low maintenance



## JSK37CX Heavy Duty

### For extra load capacity

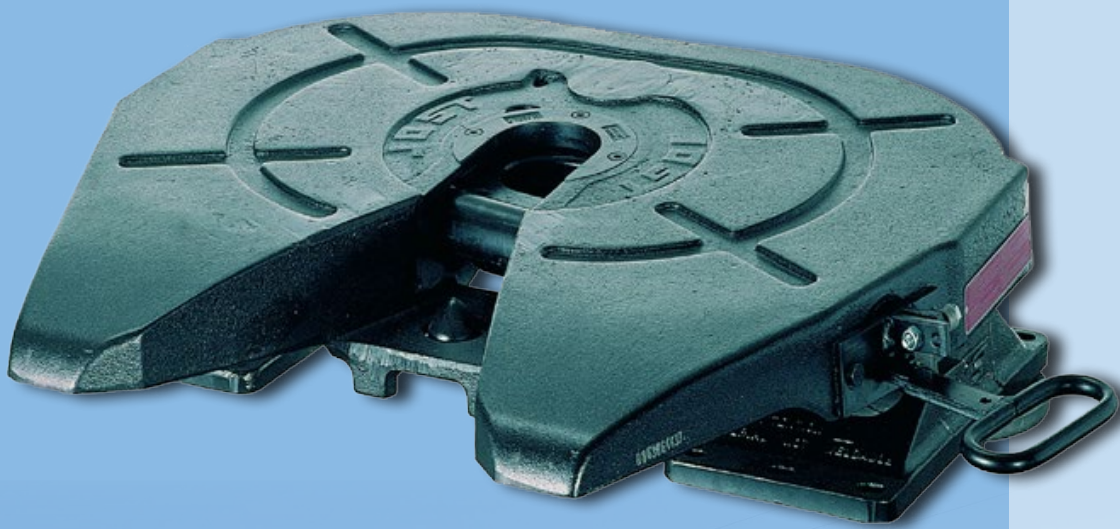
- » Specifically designed to handle high combination weights
- » Reinforced plate with extra webbing gussets on underside
- » Available in standard and low maintenance
- » D-Value up to 240kN
- » 24t imposed load



# JOST Fifth Wheel

**JOST**

Heavy Duty Fifth Wheels  
3½" (90mm) and 2" (50mm)





# The JOST Heavy Duty Range



## **JSK38C**

### Semi Oscillating 2" or 3½"

- » Interchangeable between 2" and 3½" options
- » Pedestals with shock-absorbing rubber cushion
- » Available in three height options, 160mm and 190mm bolt on / weldable or 250mm bolt on pedestals
- » D-Value 260kN (3½") and 216kN (2")
- » Imposed load 36t



## **JSK38G**

### Fully Oscillating 2" or 3½"

- » Dual oscillating heavy duty fifth wheel coupling
- » The cardan bearing allows the semi-trailer to be used off-road without distortion
- » Interchangeable between 2" or 3½" options
- » D-Value 260kN (3½") and 216kN (2")
- » Imposed load 36t



## **JSK39CS and JSK39CSW**

### Semi Oscillating 3½"

- » Heavy duty fifth wheel coupling for arduous conditions
- » Available in three height options, 160mm and 190mm bolt on / weldable or 250mm bolt on pedestals
- » For 3½" king pins
- » Replaceable wear plates for standard and low maintenance models
- » D-Value 275kN
- » Imposed load 26t



## **JSK52**

### Semi Oscillating 3½"

- » Heavy duty fifth wheel coupling for extreme applications
- » For 3½" king pins
- » D-Value 400kN
- » Imposed load 75t



## **JSK54**

### Semi Oscillating 4"

- » Extreme heavy duty fifth wheel coupling
- » 4" fifth wheel
- » For 4" king pins
- » D-Value 550kN
- » Imposed load 80t



## Fifth Wheel Coupling Sliders

Easily adjust the position of your fifth wheel coupling on your truck or trailer unit, optimising axle load, load distribution, and vehicle length.



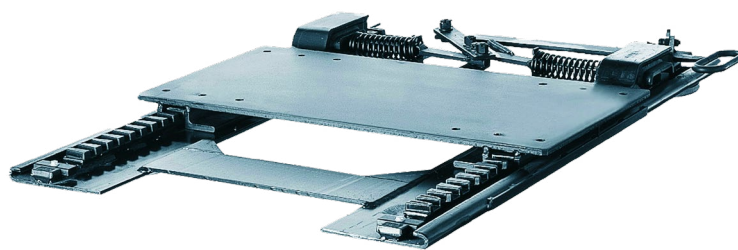


# The Slider Family



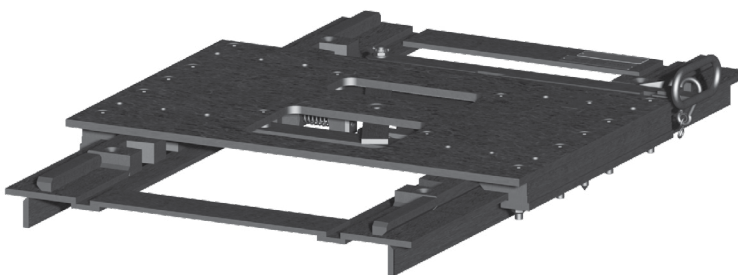
## SL Sliders Standard & XXL

- » Pneumatic release slider
- » Cathodic electrophoretic painting for optimum anti-corrosion
- » Available in various mounting heights
- » Self-locking mechanism, protected against accidental opening
- » D-Value 152kN
- » Imposed load 20t
- » Available in two travel options, 660mm and 1067mm



## EVP Slider Base

- » Pneumatic or manual options
- » Suits JOST fifth wheels with bolted pedestals
- » D-Value 133kN
- » Imposed load 18t
- » 546mm of travel



## EVHD Slider Base - Heavy Duty

- » Suits the JOST heavy duty fifth wheels with bolted pedestals
- » D-Value 260kN
- » Imposed load 36t
- » 800mm of travel





# Modul Landing Gear

# JOST

## Our experience, your benefit!

- » More than 6 million sets sold in 80 countries
- » Compact design of the internal Modul drive
- » Easy to assemble and replace foot system
- » Increased lifting force compared to comparable products
- » Outstanding corrosion protection
- » Easy to change between high and low gear
- » Proven performance and reliability

### Technical data

Lifting capacity 24t

Static load 50t

### Lift per turn of handle

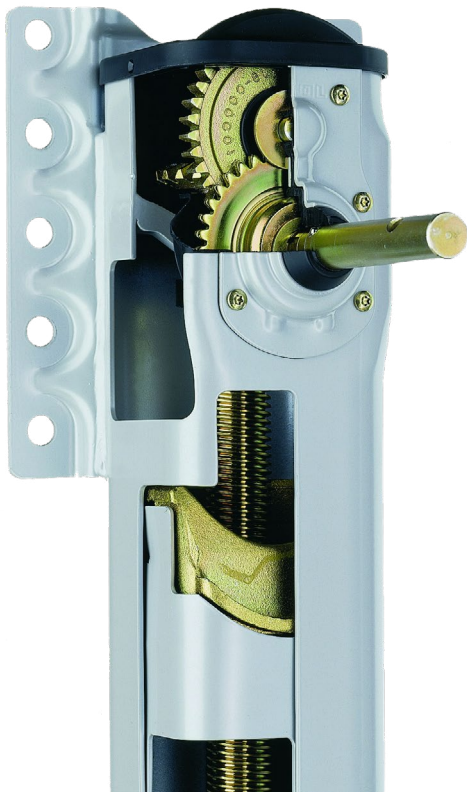
Low gear 0.9mm

High gear 15.0mm





# The JOST Modul Family



## Modul Drive

### Optimum protection

The patented drive is perfectly protected by the internal construction. In addition, it offers various advantages in daily use:

- » Easy to change between high and low gears
- » Very compact construction with high efficiency and extremely low wear
- » High speed, high gearing for faster, efficient operation
- » Low maintenance
- » Available in light weight aluminium

## Low Maintenance

### Long lasting

The Modul landing gears are equipped with a long-term lubrication. Therefore they can be used for up to three years without lubrication.

- » Long-lasting, low maintenance drive
- » Additional reinforcement for lateral-force resistance
- » Compact design of the internal drive



## Modular Design

### Greater flexibility

Modul B offers very versatile use. It can take on any task as it features a choice of mounting heights and an easy-to-assemble and easy-to-replace foot system with four different foot types.

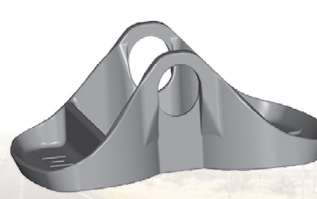
Greatest flexibility of installation thanks to various mounting heights, back plates, crank handles and connection shafts.



Modul S-Foot



Modul T-Foot



Modul TC-Foot



Modul A-Foot

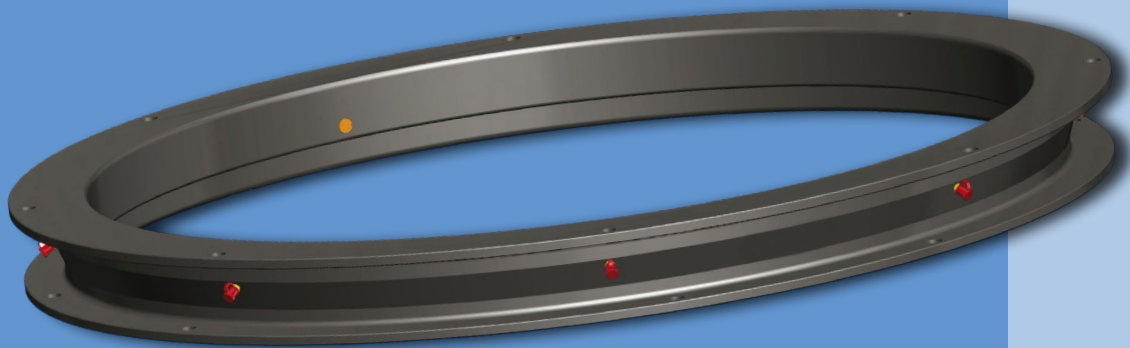


# Ballrace Turntables

**JOST**

## Robust, strong and durable

JOST ball bearing turntables and slewing rings cover the complete spectrum of trailer technology and have a solution to suit all applications.





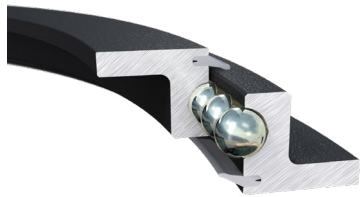
# JOST Ball Bearing Turntables



## Double Row

KLK DR

- » Labyrinth seal protects track from dirt, even in extreme conditions
- » Up to 30t imposed load
- » E-coated for premium corrosion protection
- » 8 lubrication points for best distribution of grease



## Low Profile

KDL 900

- » Low profile (56mm)
- » Up to 25t imposed load
- » E-coated for premium corrosion protection



## Single Row

KLK HE and SO

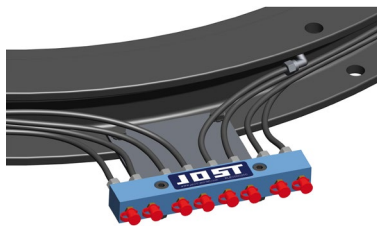
- » Single row
- » Up to 18t imposed load
- » E-coated for premium corrosion protection



## Agriculture

KLK L and N

- » L series: Equipment up to 30 km/h
- » N series: Agricultural trailers and light truck trailers over 30 km/h
- » E-coated for premium corrosion protection
- » Up to 4.5t imposed load



## Lubrication Manifold

Ease of maintenance

Makes lubrication easier.

Makes connection to central lubrication system easier.

Part Number: KLE0000200

## Ball Bearing Turntable Wear Limit Gauge



The wear limit gauge is suitable for JOST ball bearing turntables with a mounting height from 90 mm. It can be used to check if play/wear limit is reached or exceeded.

Part Number: KLE0005900



# JOST Towing Efficiency



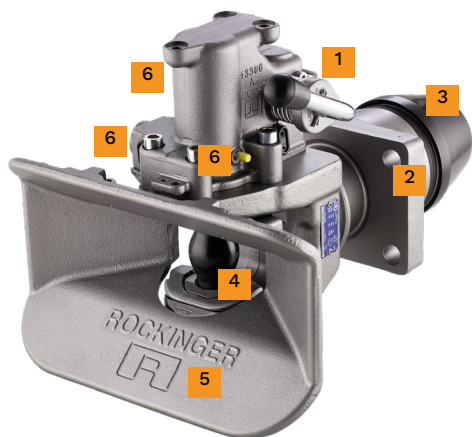
## Products for Commercial Vehicles, Agriculture & Forestry

- » Towing hitches and tow eyes
- » Pintle hooks and eyes
- » Sensor technology





# RO500B66500 Automatic Trailer Coupling



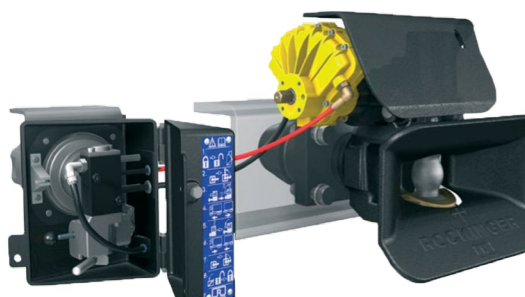
1. Strong one piece handle operation
2. 160mm x 100mm bolt pattern
3. Optional heavy duty Australian bushes
4. Rotating locking pin
5. Reinforced funnel
6. The ability to fit air operation, lock sensor and jack knife sensor options



## ROE 71547

In-cab status indicator & drawbar turn angle warning system

- » Sensor technology for safe coupling.
- » The in-cab status indicator inspects the locking position of the coupling and sensor connections and shows them on an electric display in the cab.
- » The drawbar turn angle warning system protects the vehicle and drawbar against damage as well as to rear mounted equipment e.g. tail lift cylinders.
- » 24V output required.



## ROE 71677

Pneumatic remote control

- » Ease of operation.
- » The pneumatic control option brings power, ease of operation and convenience for opening and closing the coupling.



## ROE 71676

Mechanical remote control

- » The mechanical remote control enables operation with towing hitches that are difficult to access.



# JOST Towing Efficiency



## RO500B66500 - Rockinger 50mm Automatic Towing Coupling

- » RO\*500 the universal 50mm towing hitch
- » Coupling and jack knife sensor option
- » Pneumatic or mechanical remote control option
- » No dust ingress due to sealed head unit
- » Easy to service through ROCKINGER modular system
- » High load rating. Includes vertical load capacity

### Applications

- » Road Train
- » Dog Trailer
- » Pig Trailer
- » Opens under articulation
- » Easily serviced

### Technical data

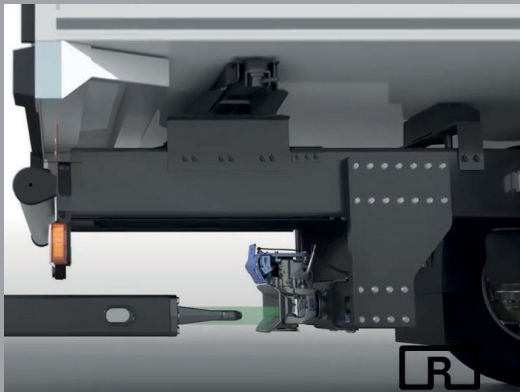
D-Value	Up to 285kN
V-Value	Up to 90kN
Static load	Up to 2500kg



# Drawbar Finder

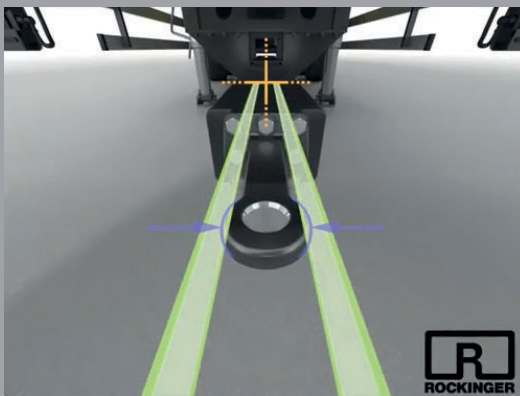


The intelligent solution for the coupling process



The Drawbar Finder provides easy-to-use support for the coupling process, which is a particular advantage when using fixed drawbar trailers. Available for commonly used remote controls.

In-cab monitor provides visual guidance in two directions - allows precise coupling, reduces damage to trucks and trailers.



With the aid of the crosshair, the driver can aim for the towing eye, making it easier to drive towards the middle of the trailer. The green lines indicate the optimum coupling height.

Can be adapted to O.E integrated monitors - Daimler, MAN, Volvo, Iveco and Scania.



# Towing Eyes



Highway, agriculture and forestry...  
we've got it covered

- » 40mm, 50mm
- » Weld-in
- » Flange mount
- » Demountable





# Towing Eyes

## Weld-in Tow Eye

40mm and 50mm



Part Number	Eye Ø	Shank H x W x L	D-Value kN	S-Value kN
ROE57260	40mm	40 x 40 x 320	18	180
ROE57270	40mm	65 x 60 x 335	125	1000
ROE57272	50mm	65 x 60 x 375	190	1000

## Heavy Duty Weld-in Tow Eye

40mm and 50mm



Part Number	Eye Ø	Shank H x W x L	D-Value kN	S-Value kN
ROE57374	40mm	65 x 57 x 335	125	250
ROE57005	50mm	80 x 75 x 380	314	1000

## Demountable



Part Number	Eye Ø	D-Value kN	S-Value kN
ROE57244	50mm	190	2500

## Flange Mount



Part Number	Eye Ø	D-Value kN	S-Value kN	V-Value kN
ROE57243	40mm	130	1000	
ROE57244	50mm	190	2500	43.2
ROE70304	Backing plate with bolts for ROE57244			

## Special Tools



Tow eye solid bush removal tool - 50mm

Part Number: ROE57228



Tow eye gauge to measure the wear of 40mm and 50mm tow eyes

Part Number: G-GNIM150



## JOST Forged Alloy Wheels

JOST premium forged alloy wheels are designed and manufactured to meet exacting standards to suit Australian conditions.

- » Up to half the weight of steel rims
- » Increased fuel economy
- » Reduced brake maintenance
- » 5 year unlimited warranty

Available in:

- » Polished, inside polished and machined finish
- » 275, 285 and 335 PCD
- » 26mm and 32mm stud hole sizes





# JOST Alloy Wheels



## 22.5 x 8.25

- » JOST alloy truck and trailer rim
- » 10 stud forged alloy rim
- » Available in polished, inside polished and machined finish
- » Available for Volvo dedicated fitment wheels
- » 168.5mm offset
- » 285 and 335 PCD available
- » 26mm and 32mm stud hole sizes available



## 22.5 x 9.00

- » 9" steer rim standard or offset
- » Available in polished, inside polished and machined finish
- » 285 and 335 PCD available
- » 26mm and 32mm stud hole sizes available



## 22.5 x 11.75

- » Truck and trailer super single
- » Available in polished finish
- » 285 and 335 PCD available
- » 26mm and 32mm stud hole sizes available



## 19.5 x 7.50

- » Dedicated trailer rim
- » 8 stud forged alloy rim
- » Available in inside polished and machined finish
- » 275 PCD available
- » 26mm and 32mm stud hole sizes available

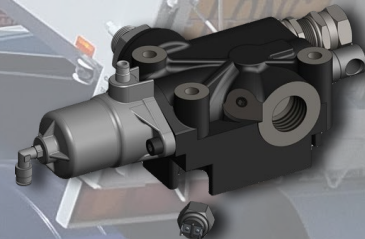
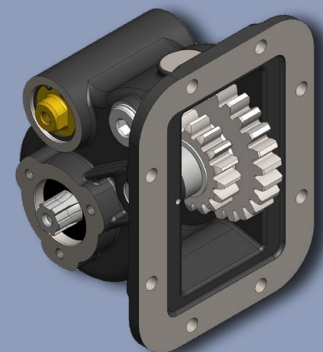
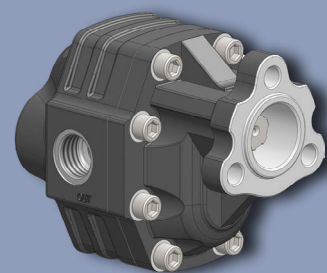




## Solutions for all applications

The extensive range of JOST Hydraulic solutions has been specifically designed for the Australian market.

- » Well Mount Cylinder range available in 3, 4 and 5 stage models, 18 to 50t capacity
- » Front Mount Cylinders available in 3, 4 and 5 stage, 18 to 45t capacity and market leading stroke range available
- » Complete Wet Kit solutions to meet all truck applications
- » Complete Oil Tank range and accessories for all mounting options



# JOST Hydraulic Solutions



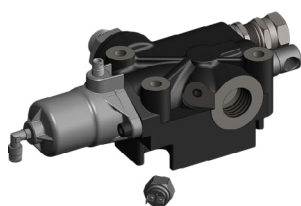
## Hydraulic Cylinders

The extensive range of JOST tipping cylinders has been specifically designed for the Australian market.

- » Available in 3, 4 and 5 stage models
- » Stroke lengths ranging from 2470mm to 8675mm
- » All stage hard chroming
- » Large stage overlap creating market leading strength & stability
- » Heavy duty forged double welded trunnion
- » Spherical seal and bearing design
- » Full lifting capacity at industry standard 135bar operating pressure

Well Mount and Front Mount

- » Forged clevis top and eye
- » Spherical bearing in clevis eye
- » 2 x bearing guides
- » Heavy duty stop ring
- » All stages hard chromed
- » Oversized forged trunnion and pins
- » Trunnion pin machined grease track



## PTO Kits

The JOST hydraulics wet kit suits most prime movers with North American, European and Japanese transmissions.

- » This kit includes premium JOST hydraulic components manufactured in Europe
- » With optional flow rates we can tailor kits to your requirements
- » Kit includes PTO, gear pump, tipper valve and control kit



## Oil Tanks and Accessories

Comprehensive range for all needs.

- » Premium Italian manufacturer
- » Multiple options
- » All tanks supplied with “anti splash” breather
- » Multiple mounting options available
- » Additional accessories available

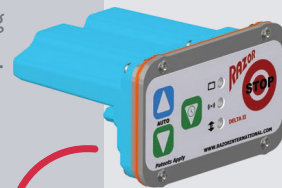


## Razor Delta II Drive

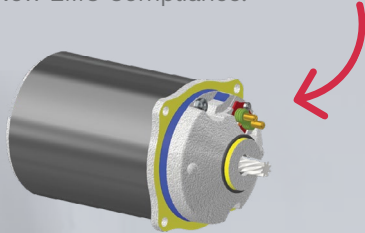
- » Modularized controller doesn't require a separate fitment or mounting
- » Durable material used for housings for life span
- » Newly designed keypad with positive "feel" button operation
- » Bluetooth enabled PCBA developed for operation reliability
- » Phone app accessibility (Apple & Google Play) & user-friendly
- » Double layer sealing throughout
- » New EMC compliance



Double later sealing on harness entry.



Engineered modular flanged motor with integrated assembly for improved brush life, waterproofness & serviceability. New EMC Compliance.



Full aluminium housings provide robust protection of controller.



Integrated secondary cluster gear with increased shaft diameter for a more robust gear train.



# Razor Tarp Systems



## Rollover Tarp System

The Rollover system ensures the tarp is clear of your load by rolling up outside the bin while tipping. The system also ensures the tarp is fully weather and waterproof.

Voltage	Voltage 12 Volt DC – with multivolt input (charge 9-30 vdc)
Torque	140Nm
Tarp Travel Time	Approximately 45 seconds



## Front to Back Tarp System

The Front to Back system is easy to use, time saving and highly efficient. It has been designed to take all the hard work out manually rolling over the tarp on your vehicle.

Voltage	Voltage 12 Volt DC – with multivolt input (charge 9-30 vdc)
Torque	120Nm
Tarp Travel Time	Approximately 45 seconds



## Top Runner Tarp System

The Razor Top Runner tarp was designed and manufactured to suit walking floor type trailers. With increased tarp tension required on longer vehicles with little or no pelmet height the Razor Top Runner does the job with ease.

Voltage	Voltage 12 Volt DC – with multivolt input (charge 9-30 vdc)
Torque	200Nm
Tarp Travel Time	Approximately 60 seconds



## Electronic Landing Leg System

Razor Electronic Landing Leg System is the safest and easiest way to separate and connect the semi-trailer for your prime mover. The electronic motor-driven system raises and lowers landing legs with just the touch of a button. No more manual winding!

Voltage	Voltage 12 Volt DC – with multivolt input (charge 9-30 vdc)
Torque	120Nm
Lifting Capacity	25t for 2 speed Landing Legs



## Tools to make your job easier

- » JOST Australia offer a selection of tools and gauges to make your job easier
- » Including simple “No-Go” gauges in addition to rated lifting tools and fifth wheel testers
- » All tools are designed for common ADR specified wear limits as well as JOST specific tolerances
- » Tools to suit king pins, locking jaws, coupling pins, tow eye bushes, ball couplings and more
- » Contact your local JOST distributor for details



# JOST Service Tools



Skid Plate Inspection Gauge to check the flatness of the skid plate

Part Number: G-SP50 to suit 2" King Pin (50mm)

Part Number: G-SP90 to suit 3½" King Pin (90mm)



JOST Fifth Wheel Lock Tester

Part Number: SK7600000 - 2" (50mm)

Part Number: SK7600090 - 3½" (90mm)



King Pin Gauge designed as a NO GO wear limit indicator, 2" (50mm) or 3½" (90mm)

Part Number: G-KP50-90



Lock Jaw Gauge to measure the wear on the jaw of JSK37, JSK36, JSK38C1/C2, JSK39 and JSK42

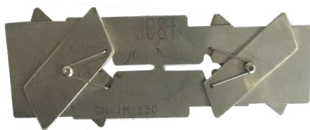
Part Number: G-LJ50 to suit 2" Jaw (50mm)

Part Number: G-LJ90 to suit 3½" Jaw (90mm)



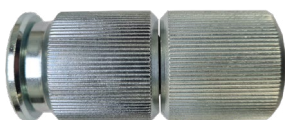
Rockinger Gauge to measure the wear on the pin of RO500

Part Number: G-RO500



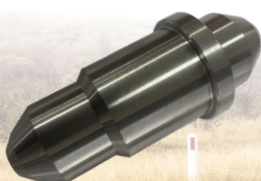
Tow Eye Gauge to measure the wear of 40mm and 50mm tow eye bushes

Part Number: G-GNIM150



Wear Limit Gauge for ball bearing turntables

Part Number: KLE0005900



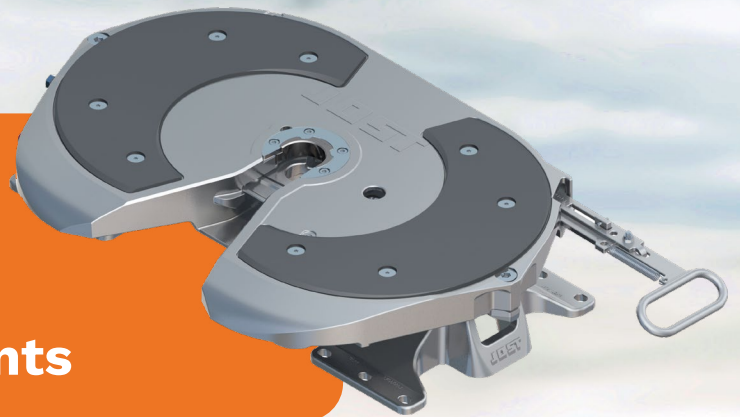
Tow Eye Bush Removal Tool - 50mm

Part Number: ROE57228



# **JOST AUSTRALIA**

**Your go-to for quality  
transportation components**



**Fifth Wheel  
Couplings**



**JOST  
King Pin**



**Single and Double Row  
Fifth Wheel Assembly**



**Modul  
Landing Leg**



**JOST Double  
Row Ball Race**



**Rockinger  
Couplings**



**JOST  
Tow Eye**



# JOST KKS - create a safe, comfortable working environment

*A world of new possibilities:* Eliminate major safety risks, physically demanding tasks, and stress factors associated with traditional coupling, while providing effortless fifth wheel release.



Coming soon.

*#futurenow*



# National Customer Service



Wherever you are...

Our after sales support is here for you when you need us.

Call us on 1800 811 487 or visit our website at [www.jostaustralia.com.au](http://www.jostaustralia.com.au).

