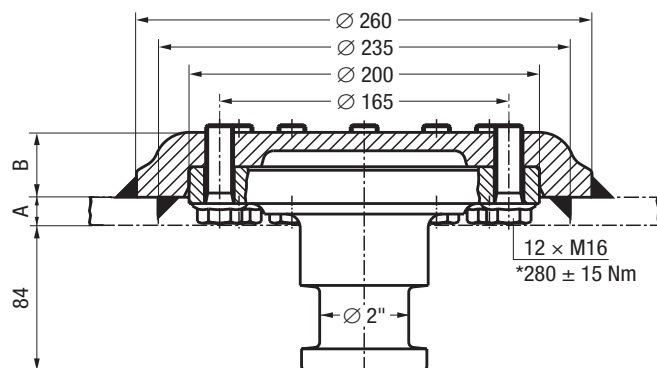


King Pin 2" – Access from underneath

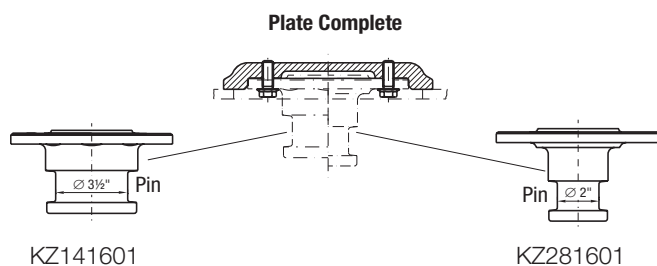
KZ2816



* Torque

Selection table / Versions available

Order No. King pins, compl.	D value (kN)	A (mm)	B (mm)	Approval (ECE)
KZ2816	152.0	16	37	–



3½" & 2" king pins are easily interchangeable

Dimensions according to DIN 74080 and ISO 337

JOIST king pins can be used in self steering axle systems.

Mounting must be carried out according to our instructions.

Spare Parts for KZ2816

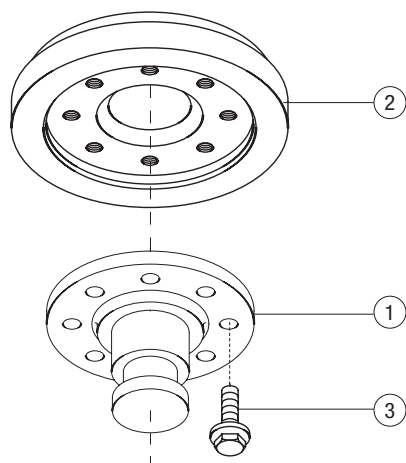


Fig.	Description	Part No.
1	King pin	KZ281601
2	Retention plate	KZ141602
3	Self-securing bolt	KZE141606

The right to alter specifications is reserved.